

COMPANY PROFILE

We help you to secure your business. We are industry leaders in providing customized security solutions.





MESSAGE FROM MANAGEMENT

“Mantra is ready to cater to tomorrow’s markets, and to serve evolving customer needs through cutting-edge solutions.”

Quick Adaptability to new technology and strong business strategies has made Mantra, the fastest growing company in the Biometric and RFID world. At Mantra, we are motivated to remain an innovative market leader in our field. We are one of the leading Biometric brands in India. We are into an ongoing improvement and growth strategy, which has helped us to increase our production capacity manifolds.

Our trade and SI partners play an essential role in our success story. Our unparalleled multilayer distribution network and a deep-rooted trusted relationship with our trade and SI partners are the foundation of the success of Mantra. We wholeheartedly appreciate the dedication and commitment of every member of Mantra team which has made Mantra the most trusted brand. We touch the lives of millions of people around the world who have our Biometric and RFID products and solutions. At present, we export to countries across Asia, the Middle East, and Africa and have built an extensive network of partners and distributors. Customers rapidly growing requirement for the complex and sophisticated security system is the inspiration behind Mantra's Innovative products and solutions. While we continue to focus on our growth and performance, we remain equally focused on our social responsibility towards the environment and our communities. Wherever we work, whomever we work with, we follow best practices and aspire to leave a positive impact on our communities.

The journey of Mantra Softech is phenomenal, with the support of employees, team members and clients we have achieved many milestones, and we are confident that the company will continue to scale benchmarks of excellence for years to come.

MANTRA

INNOVATIONS MAKE AN ORGANIZATION GROW AND PROSPER.

MANTRA SOFTECH IS DEDICATED TO ADVANCING SECURITY THROUGH INNOVATION IN TECHNOLOGY FOR IMPROVING BUSINESSES SECURITY AND INDIVIDUAL IDENTIFICATION.

Why Can Mantra Help ?

Mantra has extensive experience of 13 years with the World's Largest National ID Project "Aadhaar," India's one of the biggest Access Control Project and an Identity-based Food Distribution Project. Mantra has also worked with the top banking & financial institutions and corporates of India. Mantra is known for its innovations and will provide the latest technology based products and solutions to our customer for enchainning the security and operational efficiency.

Whom Can Mantra Help ?

The Governments of all developing countries are looking for National ID Projects, and Citizen Verification projects through biometrics. Even Banking & Telcos companies are using biometric technology to carry out e-KYC for customer onboarding and verification processes.

Besides this, Corporates are looking for Access Control, Worker Management Projects to safeguard and improve the productivity of their organization using RFID and Biometric based technology. Today's modern organization has unique biometric and RFID based technology requirements as per their business domain, location, and nature of work; therefore System Integrators are looking for a range of advanced business security solutions which are innovative, tailor made and can be easily implemented at clients end. That's why we at Mantra offer a variety of advanced Biometric and RFID solutions to cater to all these needs.

How Can Mantra Help ?

Mantra is one of the leading Biometrics, Access Control & RFID provider in India. Mantra leverages the next-generation technologies like Biometrics, RFID, and Artificial Intelligence to develop advanced Access Control Solutions, support National ID, eKYC, and Individual Verification Projects. With groundbreaking innovations and cutting-edge techniques, Mantra can help to meet the new and evolving security demands of today and tomorrow through secure identity management and authentication services.



CONTENTS

01

ABOUT MANTRA

02

MANTRA'S EXPERTISE

03

MANTRA'S BUSINESS

04

AIRPORT SECURITY SOLUTION

05

BIOMETRICS FUTURE

06

COMPANY PHILOSOPHY

07

MANTRA'S HISTORY

08

RESEARCH & DEVELOPMENT

09

OUR BRANDS

10

ACHIEVEMENT CERTIFICATION

11

OUR NETWORK

12

COMPANY CAPABILITIES

13

ORGANIZATION STRUCTURE

14

CUSTOMER PROFILE

15

MANTRA'S NEW PRODUCTS

16

OUR BIOMETRICS SOLUTION

17

CLIENT FACING BRANDS

ABOUT MANTRA

Mantra Softech India Pvt. Ltd.

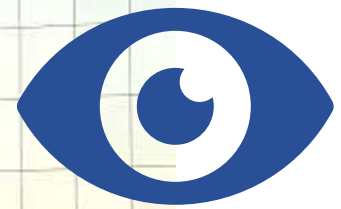
Mantra Softech is a global hi-tech manufacturer of biometric products and solutions. We offer a wide range of products in the biometric and RFID industry. Mantra was established by like-minded visionaries in Ahmedabad, Gujarat, India. It was registered as Mantra Softech India Private Limited on 06 April 2006. Customers rapidly growing requirements for the complex and sophisticated security system are the inspiration behind Mantra's Innovative products and solutions.

Globally recognized as one of the leaders in Biometric and RFID technology field, Mantra continues to position itself as an innovation-driven brand. Mantra's product portfolio includes Fingerprint Sensors, IRIS Sensors, Integrated Fingerprint Devices, Integrated IRIS Devices, POS / MicroATM / Financial Terminal, IRIS Recognition in Mobile and many more biometric devices. New products and solutions are added every year in our solution and in the product category to meet the future needs of business in terms of their security concerns. Our security solutions include Business & Enterprise Security System, Integrated Security Solution, Access Control System, Smart City Solution, Airport Solution, and many more RFID and Biometric based solutions which can enhance security, productive and transparency in small to large enterprises.

Mantra is the pioneer of implementing Aadhaar-based biometric authentication devices which are currently used by the Indian Government for monitoring the official attendance and in implementing the social welfare schemes for beneficiaries' identification. Apart from this, banking, telecom and insurance sector are also using it for customers eKYC purpose. Our manufacturing units are equipped with cutting-edge technology and powerful automation to avoid any human error in manufacturing Assembly line. Mantra's state-of-the-art Manufacturing facility is located at Ahmedabad.

Our valuable assets are Mantra's brands, R&D, and Manufacturing facilities along with unparalleled, multi-layer distribution network. With a view of taking our range of products to distant corners, we have carved out a strong network around the nation. Also, Mantra's international presence spans across African and middle eastern countries.

Mantra is one of the few players in the industry to have successful R&D facilities to improve product functionality and develop new products which are future proof. For quality standards, Mantra is committed to the core values of integrity, ethical practices, customers satisfaction, and the eco-friendliness. Brilliant quality and design achieved by the vision of our founder have led Mantra to become a global brand and tagged as the powerhouse of biometric innovations.



B

COMPANY PROFILE

MANTRA'S EXPERTISE

WE ARE EXPERT IN IMPLEMENTING INNOVATIVE SOLUTIONS TO HELP TO BECOME SAFER, SECURE AND SMARTER.

Mantra Softech India Private Limited is a leader in biometrics hardware, software, and integrated solutions development. Known simply as "Mantra" across India, we offer our clients an innovative approach to safety and security solutions for their offices, corporate buildings, and industrial plants.

Our experience in biometrics technologies and ID management solutions help us in creating a strong citizen identity solution for public services. We ensure timely delivery and economical solution for large-scale citizens' identification solution for the Governments.



Fingerprint Sensors



Fingerprint scanners are used to recognize the fingerprint of an individual for authentication purpose. Fingerprint scanners built with the Mantra fingerprint recognition module is known in the industry for the best performance, sustainability, and accuracy. A Fingerprint scanner is a safe and reliable machine for accessing data, network, computer, or any device compare to using the password to do so. Mantra has Indigenously developed various high-quality fingerprint scanners certified with FBI, STQC, UIDAI, BIS, and various other international recognized certification agencies.



IRIS Sensors



Mantra has built high-quality IRIS Sensors for IRIS Authentication of an individual. Mantra MOBIIRIS sensor module can be used as a component in mobile devices and handheld devices to enable them with IRIS authentication feature. Mantra IRIS sensors are also used as standalone or PC/Mobile-based for IRIS authentication. Mantra IRIS device MIS100 can read IRIS from the distance of 10cm to 30cm with high resolution.



Integrated Fingerprint & IRIS Devices



Integrated fingerprint and iris devices offer secure biometric authentication, combining the unique patterns of fingerprints and iris scans for enhanced security in access control and identity verification applications.

Access Control Devices



Access control devices manage and secure physical or digital access to facilities and data. They include key cards, biometric systems, PIN pads, and smart locks, enhancing security and controlling who can enter specific areas or access sensitive information.



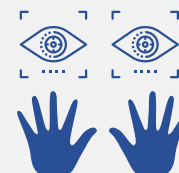
POS / MicroATM / Financial Terminal



Mantra introduced mTerminal100 and mTerminal200, which provides an all-in-one solution with mobile terminal along with various biometric technologies. These terminals are used in Financial applications, Point of Sale applications, and various government applications and projects.



Biometric Enrollment Devices



Multi fingerprint & dual iris sensors are well suited for biometric enrollment & verification process. It includes MORPHS 60 and MATIS DX biometric sensor devices to proficiently enlist a person by scanning all ten fingerprints & dual iris of individuals precisely.

MANTRA'S BUSINESS PROJECT SYSTEM INTEGRATION

We pay careful attention to client's needs at every point of interaction and we are passionate about delivering security solutions on time. We have a very prompt customer service team which always tries to resolve all the call requests on the same-day. Mantra has the people, technology and infrastructure to deliver exceptional security and surveillance solutions for your business.



Business Security Systems

Growing with every project, gaining invaluable experience and in-depth knowledge of clients' requirements, Mantra projects & SI division is the concept-to-completion solution provider for enterprise authentication platform of manpower mapping and tracking.



Enterprise Security Solution

The Enterprise Biometric and RFID Security Solution is used for all types of businesses. Mantra's Enterprise Security Solutions are known for its scalability, reliability, and cost-effectiveness.



Access Control Systems

With decades of experience in the development of reliable access control solutions for physical and logical access, Mantra is trusted by organizations and governments to provide unsurpassed access control security and protection solutions.



Integrated Security Solution

Securing today's business landscape involves a strategic methodology and proactive approach to stay ahead of possible risks. Plants and Industries need hi-tech building access control system to secure sensitive areas through utilizing access level credentials.



Smart City Solution

Mantra's Smart Cities Solution include public safety, traffic management, parking management, and waste management.

With increasing urban populations and the growing demands faced by cities, the Government needs to upgrade their cities' infrastructure and safety systems. Mantra Smart City Solution gives city's operation managers a way to upgrade the results like they have never seen before.

RADIO FREQUENCY IDENTIFICATION

Our system adopts the latest RFID technology and uses the corresponding RFID tags for the inventory, storage areas, warehouse equipment, vehicle access, and product resource management.

Radio Frequency Identification is the next generation of Auto Identification and Data Collection (AIDC) technology which helps you automate business processes. This automation can provide accurate and timely information without any human intervention. Access to such information where you can individually identify each one of the tagged items uniquely helps in improving your processes and making informed decisions.

Mantra, with its technical expertise in RFID Technology and its physics, focuses on designing, developing, innovating, deploying, and sourcing RFID hardware solutions.

Using the latest products and cutting-edge technology, we bring you a solution to Seal & Track Shipping Containers using RFID Tags.

MANTRA RFID SOLUTION



Solution Partner

Solution Partners are an integral part of the technology-based companies.



One-Stop Solution

Serve as a one-stop-shop for RFID hardware requirements.



Customization

A broad spectrum of customized RFID solutions for industry.



Support

Be your partner for the journey of RFID deployment right from the pilot to implementation.

AIRPORT SECURITY SOLUTION

Leveraging Mantra Identity Systems to enhance central monitoring, control and automate operations

Today's airports' multiple functions pose significant security and operations difficulties. These highly sophisticated hubs provide aviation services that connect isolated areas and countries by allowing people and goods to easily transit vast distances.

Significant increment in air travellers and other aircraft carrier staff required operations efficiency and enhance user experience to at airport to enable them for hassle free travel experience and secure entry / exit.

They have also evolved into miniature cities in their own right, thronging with thousands of people from all over the world and occupied by companies, different services, stores, and restaurants, and fulfilling many functions such as border and customs checks.

Airport Security, Safety, and Effective Communication

Airports are complex structures that include everything from parking lots and terminal concourses to shopping malls and waiting spaces, as well as aprons and runways.

The many challenges at airports include:

- Dealing with un-authorized entry and management of hotlist, whitelist access using centralized control & monitoring
- Contact-less, secure and hassle free entry to all passengers and air travels

Mantra Softech experience and expertise benefits

Mantra Softech's experience and expertise in the field of identity management and access control offer considerable benefits to clients and end-users.

Firstly, the company's extensive experience enables them to understand the unique security challenges faced by airports. This understanding allows Mantra Softech to develop tailored solutions that address specific requirements and comply with industry standards and regulations.

Mantra Softech's strong focus on research and development ensures that their products and services are at the forefront of technological advancements. Their innovative hardware and software solutions incorporate the latest advancements in biometrics, access control, and surveillance technologies, providing clients with cutting-edge tools to enhance security and streamline operations.

The company's commitment to customer satisfaction is reflected in their responsive technical support and maintenance services. Mantra Softech's dedicated support team ensures that clients receive prompt assistance and guidance throughout the implementation and usage of their solutions. This commitment to customer service fosters long-term relationships and builds trust among clients.

Additionally, Mantra Softech's expertise in compliance regulations, such as those set by BCAS, ensures that their solutions adhere to the highest security standards. This compliance gives clients peace of mind, knowing that they are implementing reliable and secure access control systems.

SECURITY EXPERTISE AND BENEFITS

All products uphold the same high standards of quality to deliver the best and most efficient performance. This is supported by unflagging efforts to continually improve all products and processes. Mantra designs its products so you can count on us to work as intended and are free to focus on your core business.

A Consistently High Standard of Quality committed

Our Security Systems is an innovative, customer-focused global manufacturer and supplier of security, safety, and communications products and solutions. We are committed to remaining the supplier of choice by consistently offering top-quality products and solutions backed by superb service.



Leaders in Biometric Innovation

Mantra invests heavily in research and development, channeling a double-digit percentage of its sales revenues into these activities. Over the years, this commitment has consistently generated reliable, award-winning technologies and products to benefit customers.



Customers as Partners

You reap advantages from the global network of qualified system integrators, who help you with planning, project management, or installation, whatever your needs may be.



Local Support

The pan India presence of mantra softech makes sure you have access to high-quality business and technical services. You can rely on Mantra and its partners to quickly and flexibly support you in dealing with your issues.

BIOMETRICS FUTURE



Internet of Things

Fingerprint Scanners are used for recognizing and authenticating the fingerprint of an individual. Fingerprint recognition module is considered as the reliable, sustainable and highly accurate device. Fingerprint readers and scanners are safe and reliable devices for any security authentication system that eliminates the need for remembering a password.

Entering an ID and password is outdated when it comes to IoT technology because passwords can be forgotten, shared, or guessed. Biometrics make use of an individual's physiological and behavioral characteristics such as fingerprint, iris, and vein patterns to identify the user. Since these characteristics are unique to an individual, they can be used as a secure method of authentication. Biometrics also do not change with time or age, nor are they easy to replicate or spoof. These qualities give biometric an edge over the traditional methods of identification.



Blockchain

Biometrics has proven to be one of the essential technologies for identity management. In the wave of the industrial revolution 4.0, blockchain is considered as a key to digital transformation and building a future information technology platform.

Blockchain technology is primarily designed to maintain the distributed decentralized databases, which consist of a growing list of data records in order to preserve the integrity, singularity, and validity of stored information without involving a third party for verification purposes. Information in the blockchain cannot be hacked or changed, and can only be added with the consent of all the nodes in the system.

By combining biometrics and blockchain, identity information will be stored in a distributed ledger system, meaning that the authorities no longer have access to your personal information. This offers you complete control over what information you share, and with whom.



Artificial Intelligence

In a traditional system, initial enrollment in the biometric system attains the primary samples and a given tolerance for error is implemented. However, in an AI biometric system, artificial intelligence can account for and learn subtle changes in the person to be authenticated. Too many "perfect" attempts could appear as an anomaly because it is apparent that this is not the normal behavior of a human.

The real challenge in biometrics isn't in trying to identify a user, but in determining if the biometric data presented during login is being captured from a real human or an inanimate "spoof."

AI enables a software-based approach to determine the liveness of users. The software is developed by gathering correct data of the user to create algorithms for AI software to perform the task of checking the liveness of the user.

ADVANCEMENTS IN BIOMETRIC



Face Recognition

A biometric facial recognition system identifies or verifies a person by extracting and comparing selected facial features from a digital image or a video frame to a face database. Recognizing the human face includes concentrating on certain unique features, such as the jaw, cheekbones, face shape and so on. AI-equipped cameras interpret facial expressions of people by measuring nodal points and the distances between certain points on the face. Face expression may be represented by geometric or appearance features, from transformed images such as dynamic models and 3D models. The melding of artificial intelligence, image recognition and face analysis make face detection possible even after there are subtle changes in a person's face.



Computer Vision

Computer vision is a field of artificial intelligence that empowers machines to interpret, understand, and analyze visual information from the world, enabling tasks like image recognition, object tracking, and scene understanding, with applications ranging from person to object imaging.



Behavioural Biometrics

Behavioural biometric systems monitor the user passively without any explicit gestures and try to deduce implicitly if it is the same user. The behavioural biometrics is classified into five categories based on from where the data is collected.

Authorship Based Biometrics

A text, or painting or anything authored by a person is used to analyze the style and create a unique identity.

Human-Computer Interaction Based Biometrics

The behavioural data regarding how a person interacts with computers and intelligent devices are used to create a unique identity of the person.

Indirect HCI Based Biometrics

This is an indirect form of human-computer interaction, where data regarding common usage of computer for different purposes are measured, collected, and analyzed.

Motor Skills Based Biometrics

Muscle movements depend upon the proper functioning of the brain, skeleton, joints, and nervous system and thus, motor skills indirectly reflect the quality of functioning of such systems, enabling precise identification of a person.

Purely Behavioural Biometrics

Humans use different strategies, skills, and knowledge while performing mentally demanding tasks. Purely behavioural biometrics quantifies such behavioural traits for successful identity verification.

COMPANY PHILOSOPHY



Vision

Vision is to become the world's leading identity security company to make the world more secure.



Mission

The mission is to resolve identity and security problems across the world by means of the most innovative and user-friendly products and solutions.



Value

- Works continually to prove the company slogan "Innovation That Counts".
- Customers are all-weather friends.
- We strive for excellence with constant improvements.
- Inspire enjoyable work culture & employees centric.



Pledge

We shall never indulge in any unfair practices. Employees are the greatest resources and we treat them as partners.



Philosophy

Throughout our history, Mantra has conducted its business with integrity. Our dedication to the principle of "doing the right thing" improves our long-term business performance, reputation, productivity, and employee retention.



Ethics

Integrity is at the center of everything we do at Mantra. Our Company's ongoing success stems from our deeply ingrained culture of ethics, honor, & trustworthiness. Acting with integrity allows us to meet the high expectations of our customers, partners, & communities, and gives us a competitive advantage. We believe that conducting ourselves with integrity is the only way to do business.



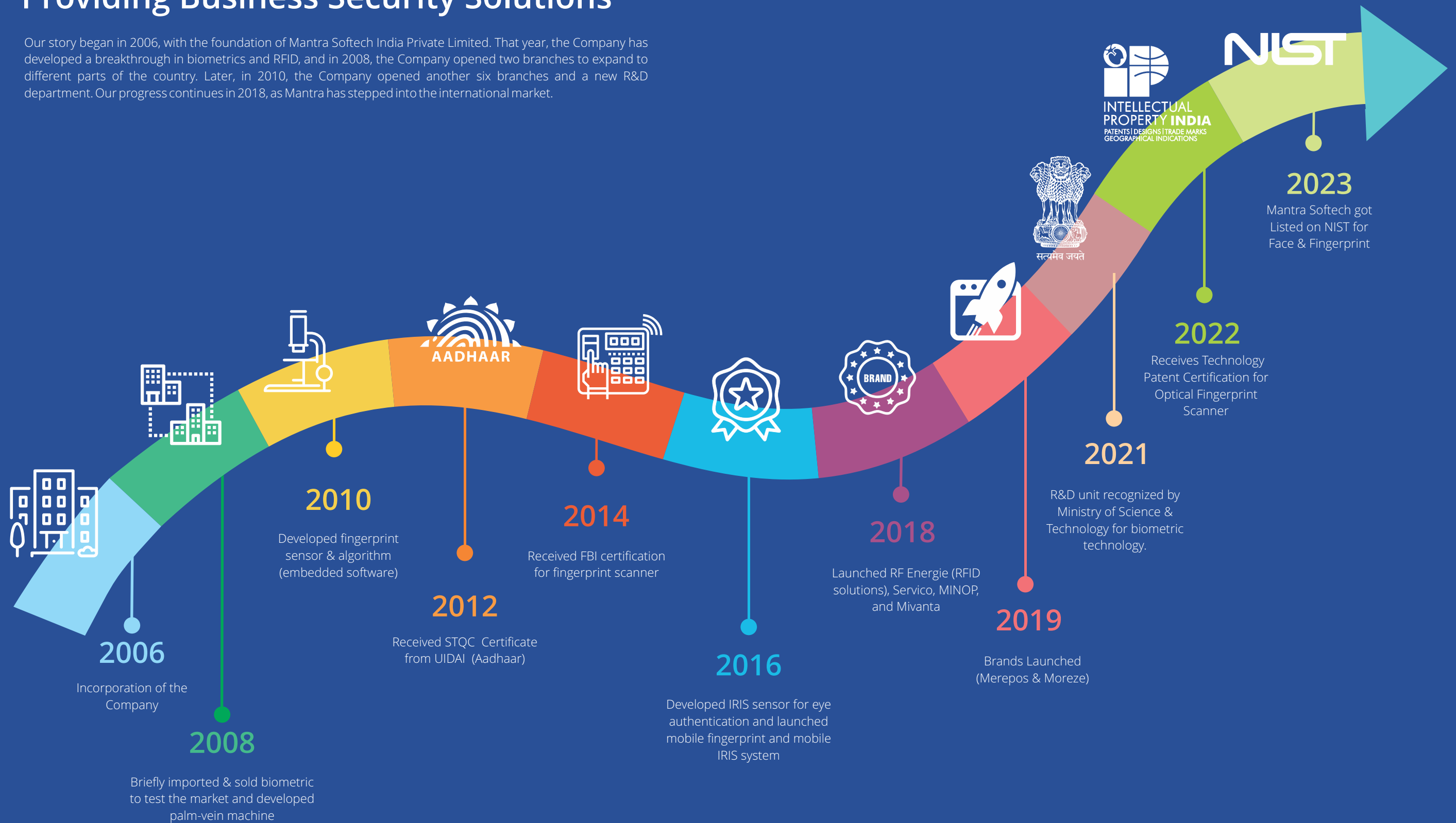
Culture

As a global leader in security and life safety, our diversity and culture are built on a foundation of these four key values, which shape how our employees interact with every stakeholder and with one another. Together, we drive our company forward. Explore your possibilities for vital and engaging work as you challenge yourself to expand your skills and career opportunities.

MANTRA'S HISTORY

Providing Business Security Solutions

Our story began in 2006, with the foundation of Mantra Softech India Private Limited. That year, the Company has developed a breakthrough in biometrics and RFID, and in 2008, the Company opened two branches to expand to different parts of the country. Later, in 2010, the Company opened another six branches and a new R&D department. Our progress continues in 2018, as Mantra has stepped into the international market.



RESEARCH & DEVELOPMENT

We help to shift the workload of user authentication from the human being to the technology, and we are continuously creating an innovative set of technologies in biometrics. Mantra's R&D department works on developing innovative technology.

Our innovative recognition technology consists of advanced algorithms for Fingerprint and IRIS devices. These technologies based solutions, conveniently and securely authenticate users with any third party application. Our technology solutions are based on cutting-edge research and have been implemented by hundreds of users across the globe. Our Biometrics software is designed in such a way that it can be integrated with any third party platform, operating system, and application to provide the best user experience.

Mantra R&D develops innovative technology-based products and solutions for customized requirements of the business. These solutions are designed to address the business-specific problems. With years of experience in the security, surveillance, and biometric system, we have developed our expertise in products and solutions development. Mantra's R&D is positioned as a custom products and solutions provider to help companies to secure and improve operational efficiency to achieve company goals.

MANTRA R&D OBJECTIVE

New technologies are changing our world at a faster pace, creating new hurdles as well as new opportunities. Through Research & Development Team, Mantra aims to play a vital role in creating innovative biometric technologies that will shape the future. Mantra works with governments and leading business to resolve significant security and identity challenges.

MANTRA'S RESEARCH & DEVELOPMENT

In-house R&D unit has been recognized by Ministry of Science & Technology for biometric technology.

Product Design Engineering

Our modern product engineering encompasses in-depth research and analysis to identify the right technologies to achieve the best performance while incurring a minimal cost.

Optic and Imaginary Engineering

We produce sophisticated optics and optical systems for absolute precision, reliability, and speed. Our modern optical systems are integral to our biometric systems.

Embedded Software Engineering

Embedded Software Engineering is the method of controlling different devices and machines. A typical embedded system requires many programming tools, microprocessors, and operating systems, created by embedded software engineers, who tailor their development to the hardware on which it will run and which will control it.

Embedded Hardware Engineering

Mantra R&D specializes in biometric hardware engineering and design, having invested decades of research in developing engineering solutions for embedded hardware. Our cutting-edge solutions also extend to product testing and value-added engineering.



POWERFUL AND EASY CLOUD-BASED ATTENDANCE SOFTWARE & SOLUTIONS

**MINOP Cloud-based Attendance
Tracking & Payroll Assistance System
for Small To a Large Organization.**

MINOP is a brand from Mantra Softech a leader in Biometric security and solutions provider in India. MINOP cloud-based time and attendance system provide a comprehensive, accurate, and affordable solution to the business.

MINOP specializes in the design and developing of cloud-based time and attendance software systems, which gives real-time access to your employees' attendance records. Whether users clock in via the mobile application, web application or through a biometric device their data is sent instantly to administration dashboard of cloud-based attendance software where it can be compiled automatically into a range of reports including payroll & attendance records.

MINOP cloud-based system design goal is to have time-attendance and Payroll assistance system to be simplified with higher accuracy, and security for managing the workforce in the organization. MINOP does not require investment in proprietary software license with hardware or any initial infrastructure to implement the time attendance system in the organization. Currently, organizations that are using MINOP are observing an increase in their employee productivity.



No more Fake Punch In or Punch Out

Uses camera for marking staff attendance.



Real-Time Monitoring

You will know immediately, in real-time which staff members are late or absent.



No Expensive Hardware

There is no need to spend a single cent on your punch card and storage server.



Instant Reporting

Download various reports instantly.



It's simply simple

Simple pricing structure. Upgrade when you need.

**OUR
BRANDS**





TRACK, MANAGE & PROTECT WITH RFID TECHNOLOGY

Choose from the Widest Range of RFID Solution



RFENERGIE is specialized in RFID and developing a solution based on RFID Readers, Tags and Controller. We bring efficiency, reliability, and accuracy to our customers with RFID solutions and technologies. When businesses select us for there project, we first understand what it takes to make every RFID application successful in the project.



The RFENERGIE provides RFID solution for Inventory Management, Asset Tracking, Container Tracking, Access Control, and Personal Identification.



www.rfenergie.com

OUR
BRANDS



INTERACTIVE KIOSK SOLUTIONS

Moreze is an industry leading Kiosk manufacturer specializing in delivering custom Interactive Kiosk solutions. Our in-house team of professionals are experts with close to 15 years of experience in solving problems with touch screen kiosks and self-service technology.

At Moreze, we blend user experience design with software functionality and interactive touch screen hardware capability to create the custom kiosk experience for your users and business needs.



SELF-SERVICE

In today's fast paced world with Do-It-Yourself (DIY) being the motto of the current generation, the utility of Kiosk machines has become increasingly popular. Kiosk machines are being used in multiple sectors like Healthcare, Hospitality, Govt. services, Banking, Retail etc. with an aim to improve customer satisfaction levels. Multiple technologies are being used but Self-service kiosk machines render better customer experience as they are easy to use, fast and seamless.



REDUCES LABOUR COSTS

One of the most important keys to profitability for every business is controlling the operational costs. With self-service kiosks, staffs employed for carrying out certain activities can be freed and can be assigned to some other work which requires more manual taskforce thereby resulting in improved morale and reduced staff turnover. Consequently, the system will minimize the overall expenditure.



CROWD MANAGEMENT

An era of self-service technology is here which simplifies user experiences for applications like enrolment, ticketing, check-in, dispensing, check-out, etc. Interactive kiosk reduces lengthy queues and eliminates need for long waiting time thereby managing crowd.



HANDLES LARGE OPERATIONS

Today, every industry needs a smart, speedy self-service technology that can easily handle some of their large operational tasks. For instance, healthcare, hospitality, banking etc. often struggle in handling large operations. Interactive kiosks bring a time-saving, speedy and efficient self-service solution that can simultaneously handle large and multiple operations.

www.moreze.com

OUR
BRANDS





BUSINESS COLLABORATION FOR GROWTH & SUCCESS

MIVENTURE is solution-based business partnership with intention to satisfy industrial use cases, with help of prominent technology and collaborative service efforts to achieve high level customer satisfaction and business benefit to partner ecosystem

-  **SOLUTIONS DESIGNING**
A precise piece of technical design to support & solve one or more business problems.
-  **DEMO, POC'S & LOCKING**
to provide a high level of understanding of how the product may function for a specific use case in the customer's environment
-  **DELIVERY ASSURANCE**
Ensuring governance and direction throughout the service entitlements, processes, and systems customer is under contract with us.
-  **SERVICES COMMITMENTS**
Highly committed to assuring quick and efficient service with a customer-first policy.
-  **ACCOUNT MANAGEMENT**
Dedicated account manager as a single point of contact for an end-to-end solution.
-  **CUSTOMER SATISFACTION**
With a customer-first policy, we provide personalized solutions meeting their expectations.

www.mantratec.com

OUR
BRANDS

SERVICO

SUPPORT SERVICES

Biometric Device Maintenance & Service Support to Enhance Customer Experience



SERVICO is engaged in offering state-of-the-art Biometric Fingerprint Attendance Machine Maintenance Services to our clients across the country. SERVICO'S services are highly preferred, as we ensure that the installed Biometric Device and Software work with precision and reduce the chances of error.

SERVICO is backed by a team of competent professionals who have years of experience in their domain and can address any complaint of the client.

SERVICO use the web-based tool, specially developed for handling clients queries, and it has the capabilities to generate and track complaints regarding the devices supplied by Mantra. The web tool also allows SERVICO to monitor the total number of complaints received in particular regions and even track those complaints in detailed so that we can allocate the resource to address the client complaint efficiently. This application will enable users to register complaints and track the status of the complaints. In addition, customer will also get regular updates on the raised ticket via e-mail.

OUR BRANDS

COMPANY PROFILE



ALWAYS AT YOUR SERVICE !

www.servico.mantratecapp.com

ACHIEVEMENT CERTIFICATION

Developed the First Optical
Fingerprint Sensor - MFS100 in India



Developed the First IRIS Sensor -
MIS100 in India



First Biometrics
Company in India to be
UIDAI Enrollment
Agency



Developed First Web-Based GPRS
Fingerprint Attendance System



Secured Lowest FRR Ranking at FRR
Competition by UIDAI / STQC / CDAC



First Biometrics
Company in India to be
UIDAI Enrollment
Agency



India's First Company to have an
FBI Certification

TESTIMONIALS



“ Appreciation Certificate from MCGM
(Municipal Corporation of Greater Mumbai).”



“ In the fast-paced world of financial services,
Our Bank trusts Mantra to protect our evolving
security needs. ”



“ The reliability and overall performance of
the solution is unique and the services
offered are commendable. ”



“ Appreciation certificate is given from
Adani port for successfully completing
Security & Surveillance System setup.”



“ Appreciation certificate is given from
Adani port for successfully completing
Security & Surveillance System setup.”



BOOK NETWORK

A map of the Americas, including North and South America, with several countries highlighted in blue. The highlighted countries are Canada, the USA, Mexico, Panama, Barbados, and Brazil. Each highlighted country is labeled with an orange callout box containing its name. The rest of the map, including other countries in the region, is shown in light gray.

A world map with 30 countries highlighted in blue. Each country is labeled with its name in an orange box with a line pointing to it. The highlighted countries are: UK, Latvia, Estonia, Italy, France, Portugal, Turkey, Israel, Iraq, UAE, Saudi Arabia, China, Nepal, Myanmar, Bhutan, India, Hong Kong, Thailand, Philippines, Malaysia, Singapore, Indonesia, Australia, South Africa, Tanzania, Kenya, Uganda, Nigeria, Ghana, Republic of Guinea, and Sierra Leone.

A map of East and Southeast Asia. The landmasses are shown in light gray, and the surrounding waters are blue. Several countries and regions are labeled with orange text boxes connected to the map by thin orange lines. The labels are: China (top center), Myanmar (top left), Hong Kong (center, on the coast of China), Thailand (center left), Philippines (center right), Malaysia (bottom center left), Singapore (bottom center left, below Malaysia), Indonesia (bottom center), and Australia (bottom right).

COMPANY CAPABILITIES

Project Solution

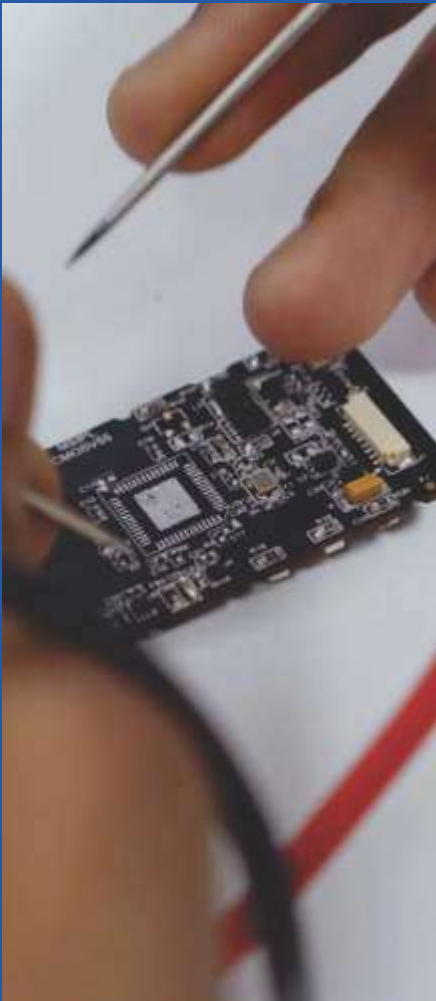
The company's strength towards innovation is an ability to integrate all of our technologies to match customer requirement. We integrate Access Control Security with Attendance, Access Control with Surveillance, Surveillance with RFID, Security with Home and Office Automation, and Biometrics with Smartcard, and so on. Our company develops most of the product indigenously, and we use imported products to match customer requirement and budget. Company has the software and hardware team to integrate any technology. We are committed to providing total quality solutions to give technology benefit in enhancing business and security.

Product Solution

Everyday technology is changing our world, making tomorrow just a little bit smoother and more secure than yesterday. We, at Mantra, are dedicated to driving these developments happening around us and supporting the evolving identity-based security programs. With powerful technological strength, Mantra is developing new technologies and solutions to offer reliable identity management solutions that include citizen enrollment and identification. Drawing upon a decade of experience and expertise in the biometric industry, we extend our support to the world's most extensive biometric ID program - Aadhaar.

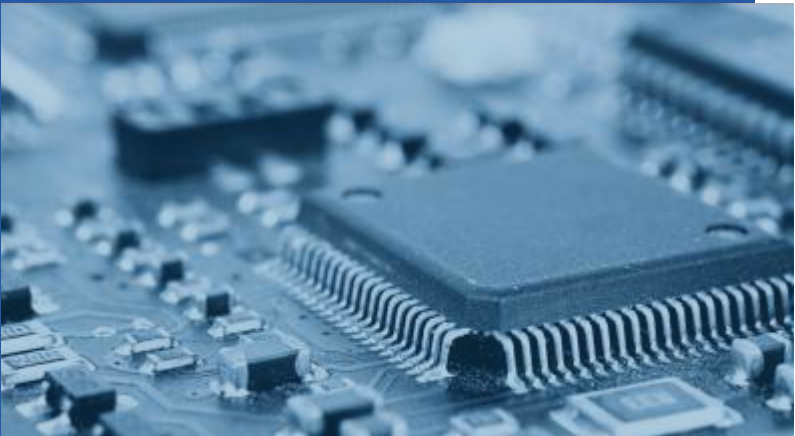
Mantra's R&D division adopts the latest and secure digitization strategies to incorporate a custom GMS Android operating system with the latest embedded technology. Leveraging combined R&D strengths in manufacturing engineering, electronics, optical and imaginary engineering, our R&D team focuses on the seamless intersection of latest embedded software and hardware technology to develop cutting-edge products & solutions.

For corporates in today's world, access control plays a vital role in the security of buildings, whereas time-attendance data is requisite for smooth & efficient HR applications, such as workforce movement within the premises and payroll management. Our team focuses on developing advanced and innovative biometric identification technology for efficient time-clock and access control devices to meet both these modern-day requirements of a corporate world. Additionally, our team of qualified professionals is dedicated to implementing the latest technologies to develop the products and solutions for convenient and simple user experience.



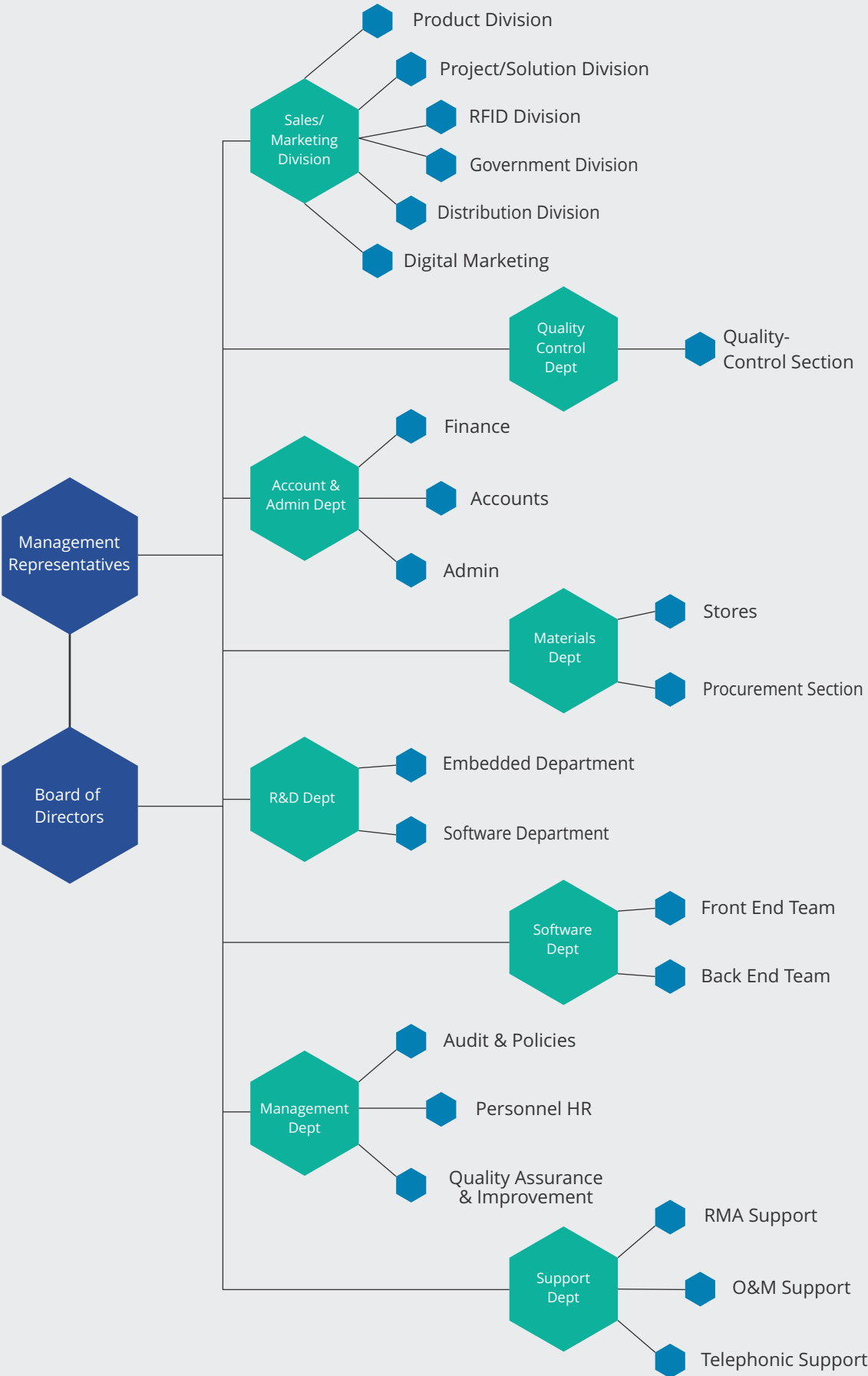
Research & Development Strength

Mantra's research and development center's strength lies in its ability to conduct innovative research, develop advanced technologies, foster collaboration, and drive product innovation, positioning the organization for long-term success and competitiveness.



ORGANIZATION STRUCTURE

Mantra Softech India Pvt. Ltd.



CUSTOMER PROFILE



COMPANY PROFILE

- Company has a strong presence in the BFSI sector serving significant banks, NBFCs, and Asset Management Companies.
- The company enjoys nearly 50% market share for UIDAI certified products.
- Company is a partner of choice for major System Integrators (MNC as well as domestic). In many situations, SI is required to buy Mantra products despite having their own product.

MATISX

ADVANCED DUAL IRIS SCANNER



MATISX is a portable and easy-to-use dual-iris capture device that can simultaneously capture both irises with higher accuracy and greater speed. The innovative dual iris scanner is packed with compelling features that make the device suitable for diverse biometric enrollment and identification applications. Designed with the latest biometric technology, MATISX is physically robust, highly reliable, and durable.

The dual iris scanner comes with the auto capture functionality for quick and easy double iris image collection. The device conforms to IP54 standards for water and dust resistance. MATISX offers a convenient way to capture high-quality dual iris images to meet the demanding ANSI NIST and ISO standards. MATISX has an adjustable interpupillary distance range, and the device is compliant to eye safety standards. The design of the MATISX further enhances its durability allowing easy cleaning of the device. MATISX meets or exceeds, CE, FCC, RoHS and WHQL certification standards.



MORPHS

MULTI FINGERPRINT SCANNER

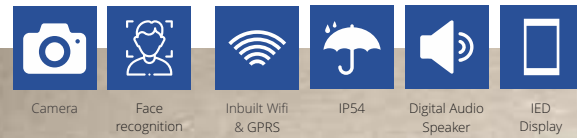


MORPHS is a unique & portable ten-print fingerprint capture device used to capture multi fingerprints. The device is ideal for delivering fast, accurate and reliable fingerprint capture results for biometric verification, identification and enrollment applications. MORPHS is widely used for enrolling citizens by local or central government organizations, UID-Aadhaar, NPR, National ID projects, World Bank and UNESCO schemes. Additionally, an ergonomic design combined with an easy-to-integrate SDK architecture makes MORPHS the perfect choice for system integrators and solution providers.



BIONIC FACE

ENTERPRISE WIDE FACIAL RECOGNITION SYSTEM



Face Recognition Devices identifies individual with their facial features. As an individual approaches a face recognition device, the device captures the image of the individual and compares it with the previously registered face templates already stored in its database. If the device makes a successful match, it notifies the individual and also records the time of the event. If connected to an access control system, time attendance system, visitor management system, canteen management system and many more such identity management system.

BioNIC F6

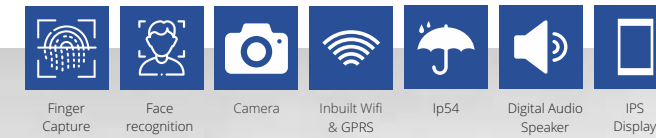


BioNIC F9



BIONIC FACE & FINGER

Experience the Ultimate in Security Through Facial & Fingerprint Technology



Combines facial recognition and fingerprint biometric technologies for secure and efficient identity authentication. This dual-authentication system enhances access control and ensures accurate user identification in various applications, from security to attendance tracking.

BioNIC FP6



BioNIC FP9



BIONIC X

Face & Fingerprint Recognition System
Redefining the Access Control system



This industrial multi-modal terminal is designed with face and optical finger sensors to serve industrial use cases and is powered by the most advanced facial and finger matching engine along with Face, Finger it also supports PIN based verification. The terminal can handle a variety of industrial USE CASES, including visitor management, attendance, access control.

BioNIC F6

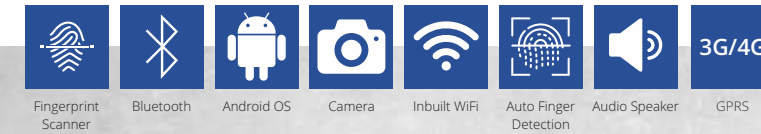


BioNIC F9



MBAS10 / 20

SEAMLESS BIOMETRIC TIME ATTENDANCE
& ACCESS CONTROL DEVICE



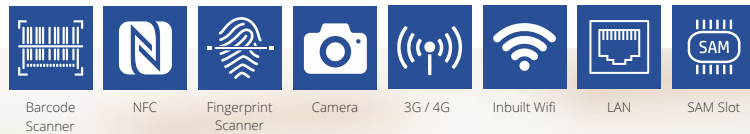
For many organizations, access control has a vital role to play in the security of buildings, while time & attendance data is imperative for HR applications, for assisting with payroll and personnel management. Mantra's seamless biometric time attendance and access control device MBAS10 / 20 meets both these needs with the help of an advanced biometric algorithm and PIV/STQC certified FAP10 scratch free biometric fingerprint sensor.

MBAS10 / 20 is a wall-mounted time attendance & access control system. The device is highly durable as it comes with a capacitive scratch resistant touch screen. MBAS10 / 20 utilizes the latest biometric technology to authenticate and identify users with the help of their unique fingerprint impressions. The device exhibits extended versatility with built-in GPRS, 3G / 4G, WIFI and Bluetooth, and is packed with 3,000 mAh battery. The rugged design and IP54 rating make the device suitable for deploying across multiple environments, either indoors or outdoors.



MOXA7

HANDHELD BIOMETRIC TABLET FOR TIME ATTENDANCE
& ACCESS CONTROL

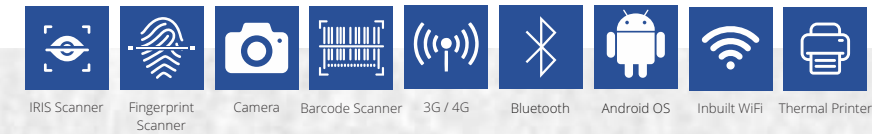


MOXA7 is a portable biometric tablet, packed with essential features to meet diverse biometric enrollment and identification project needs. The device is equipped with a reliable fingerprint scanner and camera to capture high-quality images and includes a stunning 7-inch display. The device features accuracy, reliability, and durability that you need for any biometric identity management application.



mTerminal100

BIOMETRIC POS TERMINAL



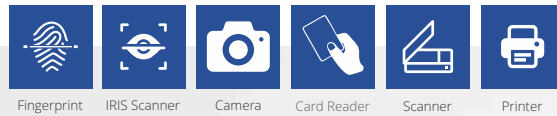
Mantra mTerminal100 is an IRIS and Fingerprint scanner based POS machine which is developed based on the latest embedded technology. The use of biometric fingerprint recognition within a POS system adds value to the customer apart from the use of barcodes and/or pin numbers which directly increases the overall operational efficiency of the business.

mTerminal100 supports an external keyboard which can be connected through USB or Bluetooth interface. With STQC certified fingerprint and iris sensors, the terminal is designed to accommodate the increasing use of biometric authentication for payments. Our biometric POS terminal is best suited for implementing fingerprint authentication for multiple financial services such as branchless banking, microfinance, government to person (G2P) payments, and likewise.



BIOMETRIC KITS

THE START OF A UNIQUE ID USING
BIOMETRIC REGISTRATION KITS

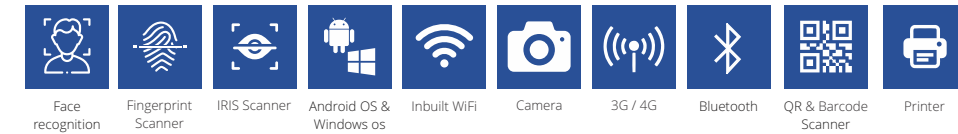


Mantra identification has proven itself in designing flexible biometric solutions in ruggedized cases for registration, identification and verification purposes. Various solutions have been provided all over the world. The components in the biometric registration kits have survived harsh conditions, protected by aluminum and ABS cases.



ENROLLMENT KIOSK

A BIOMETRIC AND IDENTITY ENROLLMENT KIOSK FOR
COLLECTING PERSONAL DATA FOR DIFFERENT APPLICATION



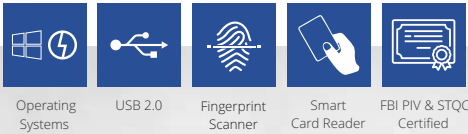
We have what you need – whether industry specific or customised Kiosk

Every kiosk is built based on fine details under expert observation, combined with advance technologically that truly heighten the user experience. There are various benefit of futuristic self-service Kiosks in different industries like Hospitality, Healthcare, Banking, Entertainment, Retail, Personnel management, etc.



MSKB100

SMART AUTHENTICATION KEYBOARD



This Smart Card Authentication Keyboard provides durable typing solution, stylish keyboard access secured PCs or networks directly from your keyboard. The Mantra's smart authentication keyboard MSKB100 has an integrated smart card reader and built-in biometric fingerprint module for easy authentication at your fingertips.

The fingerprint reader allows you to log-in with just your Contactless Smart Card or fingerprint. You can use your fingerprint to automatically log into without typing in your login credential.

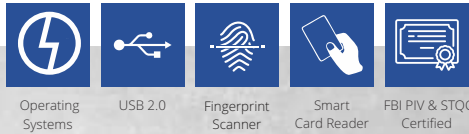
PC/SC compliant wired USB connectivity helps provide secure, fast data transfers while eliminating the need for batteries.

MSKB100 offers users the convenience to gain access to confidential files with the swipe of a finger. The state of the art biometric solution for authentication gives you the convenience of simple fingerprint authentication only, or configure for one of the most secure log-in processes.



BIO-HHT

RUGGED AUTHENTICATION HANDHELD DEVICE



An innovative Fingerprint Reader Device, Bio-HHT is an advanced handheld biometric device from Mantra. Bio-HHT has an IPS display screen with a keypad. A ruggedized portable biometric device is built for rough work in harsh conditions. It brings the convenience of mobility combined with biometrics and id card reading technology.

Keeping in mind its outdoor application, this wireless fingerprint device with a smart contactless card reader has an inbuilt battery that can handle long hours of intense usage. The handheld biometric device is protected with a rubber gasket around it to ensures it has a good grip along with an elegant look and feel. Bio HHT is a perfect device for mobilizing and empowering your workforce for biometric applications.



MELO31

OPTICAL FINGERPRINT SCANNER



Operating Systems USB 2.0 Fingerprint Scanner Lower FAR & FRR FBI PIV & Mobile ID Certified IP65

FBI PIV certificated, MELO31 is a versatile and field-proven optical FAP30capture area fingerprint scanner. It comes with a large platen area (20.32mm x 25.40mm) to capture biometric data with great precision, speed and convenience. An array of advanced features like latent detection, lower false acceptance rate (FAR), and false recognition rate (FRR) and MINEX compliance embedded extractor support make it suitable for extensive applications that require optimum security and high accuracy. Backed with rugged and scratch-free sensor, MELO31 serves a wide range of industries to ensure seamless identification, verification, and authentication.



MFS110

OPTICAL FINGERPRINT SCANNER



Operating Systems USB 2.0 Fingerprint Scanner Lower FAR & FRR STQC / Aadhaar Certified

MFS110 is an elegant fingerprint device used for identification, verification and authentication processes of an individual. MFS110 offers secured biometrics data, error-free and reliable identification based on unique fingerprint biometric technology. It is fast & easy-to-use. It can be used as an alternative or a complement to those hard-to-remember passwords.



MARC10

SLICK CAPACITIVE FINGERPRINT SCANNER



Operating Systems USB 2.0 Fingerprint Scanner Lower FAR & FRR FBI PIV & Mobile ID Certified

MARC10 is a secure and reliable fingerprint scanner for precise identification, verification and authentication process. MARC10 captures high-resolution fingerprint images with the most rugged and advanced Capacitive sensor. The device supports MINEX compliance embedded extractor which is a FAP10 compliant fingerprint device.



MFS500

OPTICAL FINGERPRINT SCANNER



Operating Systems USB 2.0 Fingerprint Scanner Lower FAR & FRR STQC / Aadhaar Certified

MFS500 is a high-quality USB fingerprint sensor for fingerprint authentication of an individual to access information from the database, to access computer-based system or to access a network security system. The device utilizes optical sensing technology for efficiently recognizing poor quality fingerprints. MFS500 can be used for authentication, identification and verification functions that let your fingerprint act like digital passwords that cannot be lost, forgotten or stolen. Hard optical sensor is resistant to scratches, impact, vibration and electrostatic shock.



SECURITY SOLUTIONS FOR INDUSTRY 4.0

A One-Stop Solution for Innovative & Effective Biometric and RFID Application



In the prevailing security scenarios, physical security is not adequate to confer impregnability and secure the enterprise-grade assets. Consequently, both the physical assets and the informational data seek enterprise-wide smart identity mechanism solutions to insulate risks with the help of intelligent and functional technology.

The effective automation system compliments the human resources and security infrastructure to thwart any subtle or coerce tricks employed by the perpetrators. The electronic identity not only creates a denial deterrence or authorizes access to the right entity but also provides real-time data and footprints of users in premises, assists in measuring the usage of resources, strategizing, security processes optimization, security infra optimization, effecting statutory compliance governance, wage calculation, and loss of working hours by its governance processes.

Access regulation at critical areas effectively protects proprietary confidential information and business assurance of the enterprise; besides adopting administrative measures. It also develops the operational discipline of an organization for complying with the policy and other statutory regulations to obviate any probable litigation, violations or omissions needed to run a business.

The enterprise identity system is the backbone of any security or automation projects that assign functional ID or service ID to all enterprise personals and machines/vehicles. In a service ID system, an individual receives a unique identifier from the organization that is used for identity assertion and verification. It includes ensuring uniqueness in the system, interoperability, privacy by design, reaching scale, avoiding vendor lock-in, maintaining affordability, and so on.



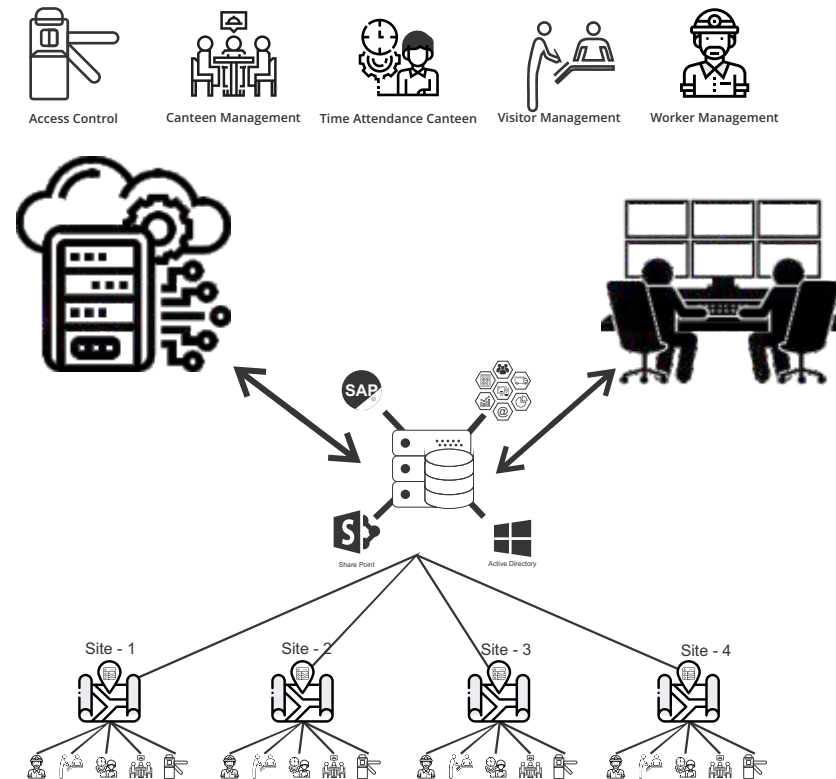
MORZEL OFFERS THE FOLLOWING SOLUTIONS



Every Industry requires an integrated, custom tailored solution for better performance and efficiency. Mantra is moving beyond the Traditional Biometrics solution by introducing integrated Biometric solutions and offering customized solutions. Mantra develops innovative technology-based products and solutions for a customized requirement in any Industry-specific applications.

PRAVESH

POWERFUL ACCESS CONTROL & SECURITY MANAGEMENT SOLUTION



Bringing More to Access Control Into Your World

Pravesh is an advance, customizable, and complete access control & security management solution. Developed smartly to meet the complex security needs of the larger facilities around like oil refineries, ports, plants, airports, shipbuilding, and a variety of diverse manufacturing companies; pravesh is known for scalability, stability, and security, it's an proven solution and implemented in many large organizations where security is of paramount importance.

Key System Features

- ◆ Supports wireless technology
- ◆ Multi-language support (depends on client's requirements)
- ◆ Highly customizable hardware
- ◆ Scalable and redundant architecture
- ◆ A sophisticated software security suite
- ◆ Supports third-party softwares through API
- ◆ A highly stable operating system like Linux, Windows
- ◆ Can work with multiple technologies like biometrics, RFID, AI & more
- ◆ Seamless integration with external systems; CCTV, Fire, Smoke, and Intrusion Detectors, and more

WHAT CAN PRAVESH OFFER YOU?



System resilience

PRAVESH features layers of resilience. The server we provide or suggest for access control and security system is so powerful that it can work smoothly with a larger database. It is configured with a highly stable operating system that can be further enhanced with a redundant server.



Flexible and customized solution

The IT and security needs of all working locations are different depending on the nature of the work. Thus, PRAVESH is designed with highly customizable software and hardware to meet unique project needs. PRAVESH software also incorporates built-in user-definable fields that enable customers to build customized frontend and incident reports. It also helps in improving efficiency and effectiveness by offering a simplified and more effective system management functionality.



Future proof

Designed with a high degree of adaptability to cater user's varied requirements, the system hardware and software are made flexible to expand and upgrade as per the needs, which makes PRAVESH a scalable solution.



Integration

PRAVESH supports integration using industry-standard interfaces to link with the third-party security systems. Acting as a smart and efficient identification, security surveillance, and access control system, PRAVESH provides powerful command and control center for incident and alarm management of multiple systems, including access control, video surveillance, fire, smoke and intrusion detectors, and much more for managing and monitoring multiple working locations of enterprise.



Central/remote configuration

Designed with built-in intelligence, integrated with advance control room system due to which customers get the ease of system maintenance, up-gradation remotely as well as manage all other system devices utilized in access control, vehicle parking, canteen management and more. PRAVESH command control system centrally manages all security systems during emergency situations for safeguarding and protecting all tangible assets in the organization.

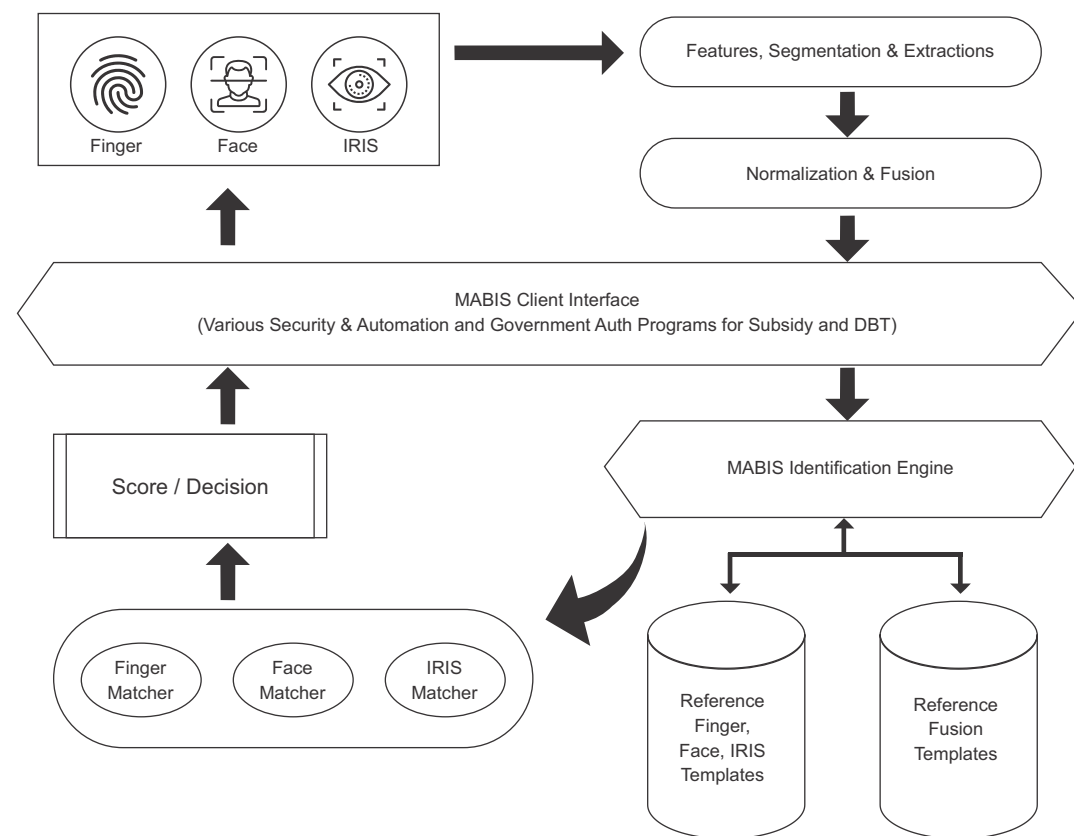


Centralized & decentralized system

PRAVESH offers centralized and decentralized server support with Client-Server configuration.

MULTI MABIS

An Automated Biometric Authentication System



MULTI MABIS is a fast Automated Biometric Authentication System, capable of capturing and storing multiple biometric templates within a short period of time. It utilizes various identification methods like Fingerprint, IRIS, and Facial recognition to store, update or delete biometric data of users. This high-performance authentication system can be used with any large-scale biometric system in the back-end to de-duplicate, check and remove biometric data having inconsistencies. MULTI MABIS supports computing resource intensive one-to-many (1: N) and one-to-one (1:1) biometric matching operations for precise, fast and accurate identification of individuals.

For a large-scale biometric project like citizen identification, biometric data of millions of people are required to be captured and stored. Usually, all data is collected in local database and then merged into a central database. Before a citizen ID card is issued, the authorized agency makes sure that one person did not register multiple times. This can be achieved using Biometric De-duplication software such as in MULTI MABIS. Moreover, to merge any decentralized biometric data into a central system requires identifying all duplicate records to unify transaction data under unique personal identities. Therefore, any decentralized biometric projects in areas such as citizen ID development, banking, micro-credit lending, voter ID issuance, access control, and hospitals or rural clinics can significantly benefit from a MULTI MABIS system that enrolls and identifies an individual, self-check the de-duplication and supports user's biometric data removal functionality.

KEY FUNCTIONS OF MULTI MABIS



Enrollment

Enrollment is the process of capturing and registering the user's biometric data such as fingerprint, IRIS, and facial images. MULTI MABIS system enrolls the users by recording their biometric data and storing them into the database. While registering a user in the database, MULTI MABIS will self-check the de-duplication of a new user's biometric data by comparing it against large biometric database stored on the server.



Identification

Biometric identification consists of determining the identity of a person. The process involves capturing an individual's biometric data, then comparing the biometric data with enrolled biometric database. MULTI MABIS support identification process, by quick and accurate matching of the captured biometric data of users with the stored/enrolled biometric record from the database.



Removal

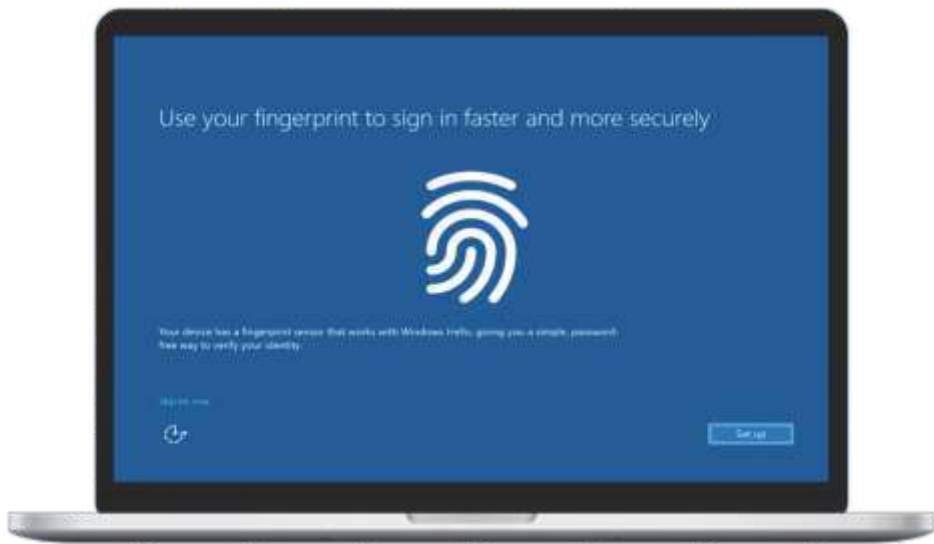
Removal is the process of removing a user biometric data from the database. Once the user has been removed, it will not be reverted in the system. Hence, MULTI MABIS facilitates an irreversible biometric user data removal process.

Features

- Biometric Enrollment and Identification
- Fingerprint, Iris, and Facial Recognition
- Rapid Matching Process
- Fusion Identification
- Multiple Biometric Device Model
- API Platform
- Full MINEX Compliance
- Multiple Database Platform

WINDOWS BIOMETRIC FRAMEWORK

For Fingerprint Based Login



The Windows Biometric Framework (WBF) has set of services and interfaces to support the development and management of biometric devices.

It provides compatibility with biometric services and drivers and allows device to interact with the system and supports biometric solution development.

The Windows Biometric Service enables client applications to capture, compare, and store biometric data without having direct access to the biometric hardware.

Overview

- Biometrics technology is a widely used technology for identification and verification.
- It provides convenient access to systems, services and resources.
- Biometric technology is based on measuring the unchanging physical characteristics of an individual to uniquely identify that person.
- Fingerprint recognition is the oldest and the most deployed biometric recognition technique.
- It is one of the most economical biometric PC user authentication techniques and has a very high accuracy rate.
- Millions of fingerprint biometric devices are now embedded in personal computers and peripherals.

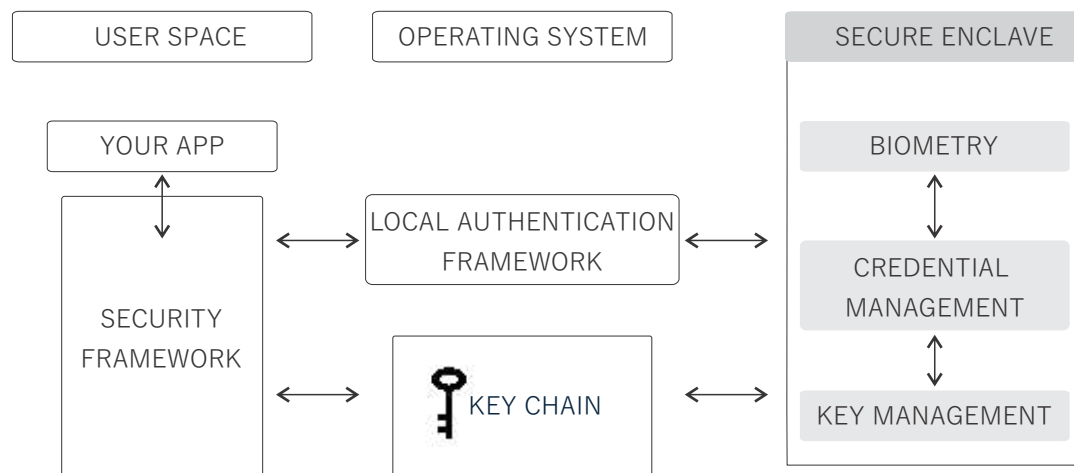
APPLICATION OF WBF



- It allows users to manage device settings
- It allows users to troubleshoot biometric fingerprint devices
- Allows to log on to a local computer or domain using biometric data

MYAUTH

Secure & Scalable Enterprise Identity
& Access Management



PROBLEM

Small-to-Medium and Large Enterprises are increasingly facing challenges related to identity and access security breaches and compliance regulations. With staff working remotely and a challenging economic environment, the pressure on business and their IT departments to ensure an effective identity and access management security and privacy has never been greater or more critical. Combine this with a significant skills shortage of IT Administration and Development in the sector, demand is growing for simple solutions that work effectively and can be scaled up easily in the long run.

SOLUTION

MyAuth Windows Identity and Access Management is all about making the complex simple. It is useful for those enterprises who want to enhance identity and access security by adding additional layer of security through biometric and multifactor authentication. This applies but not limited to banking, finance, manufacturing and healthcare industries.

MyAuth access solutions are built around Finger Print Biometrics and Multifactor Authentication (MFA).

BENEFITS

MyAuth identity provisioning system helps enterprises ensure that the right users have access to the right applications and infrastructure in the most secure way (Biometrics and Multifactor Authentication). It provides a secure, automated identity lifecycle management solution that helps enterprises automate provisioning and de-provisioning of all user accounts.

MYAUTH IDENTITY & ACCESS MANAGEMENT LIFE CYCLE



End-User Provisioning (Account Provisioning) is triggered by events like hiring, promotions, and transfers. Deprovisioning, on the other hand disabling or removing a user's access to a windows based application. End-User provisioning with help of MyAuth helps keep your company's identity and access secure by ensuring employees, partners or customers have access only to the apps they need.

Deprovisioning helps keep your company secure by ensuring that whenever an employee, partner or customer leaves, their access is automatically removed for all connected applications.

MULTI FACTOR AUTHENTICATE

For Fingerprint Based Login

In the fast-paced digital age, information technology plays a vital role in the success of any organization. With the increasing use of IT systems, it is essential to secure them from unauthorized access and misuse. Traditional authentication methods, such as alphanumeric passwords and biometrics, have their limitations and can be vulnerable to various cyberattacks. In this brochure, we introduce you to the power of Multi-Factor Authentication (MFA) and present our cutting-edge 3-Factor Authentication (3FA) system, designed to provide robust security for your organization.

Types of Authentication Factors in MFA

MFA combines three primary categories of authentication factors:

- **Something You Know (Knowledge-Based):** This includes passwords, PINs, and secret questions. Users must provide information they know to authenticate themselves.
- **Something You Have (Possession-Based):** Physical objects like smart cards, tokens, or smartphones serve as the possession factor. Users must possess these items to verify their identity.
- **Something You Are (Inherence-Based):** This factor relies on unique physical traits, such as fingerprints, facial recognition, or iris scans, to identify the user.

MFA ADVANTAGES

End-User Provisioning (Account Provisioning) is triggered by events like hiring, promotions, and transfers. Deprovisioning, on the other hand disabling or removing a user's access to a windows based application. End-User provisioning with help of MyAuth helps keep your company's identity and access secure by ensuring employees, partners or customers have access only to the apps they need.

Deprovisioning helps keep your company secure by ensuring that whenever an employee, partner or customer leaves, their access is automatically removed for all connected applications.



- **Enhanced Security :** MFA adds layers of protection, reducing the risk of unauthorized access.
- **Reduced Vulnerability :** With multiple factors, the chances of compromising the entire system are significantly reduced.
- **User-Friendly :** MFA solutions are designed to be user-friendly and seamless, minimizing user resistance.
- **Regulatory Compliance :** MFA aids in compliance with data security regulations and industry standards.
- **Improved Trust :** MFA instills confidence in your customers and stakeholders, knowing their data is secure.

CLIENT FACING BRANDS

We develop smarter technology to improve businesses. Our knowledge and experience allow us to anticipate changes across geographies and industries and deploy the right solutions rapidly. In the most challenging and demanding environments, we help our customers achieve their safety, security, and business goals. For more than a decade, Mantra has been delivering the latest solutions to unique business challenges. Today, Mantra Integrated Security brings these solutions to enterprise, mid-size, and small business companies, kindly look at some of our clients.



MANTRA

✉ sales@mantratec.com 🌐 www.mantratec.com ☎ +91-79-49068001

Copyrights Mantra Softech India Pvt Ltd. All Rights Reserved.