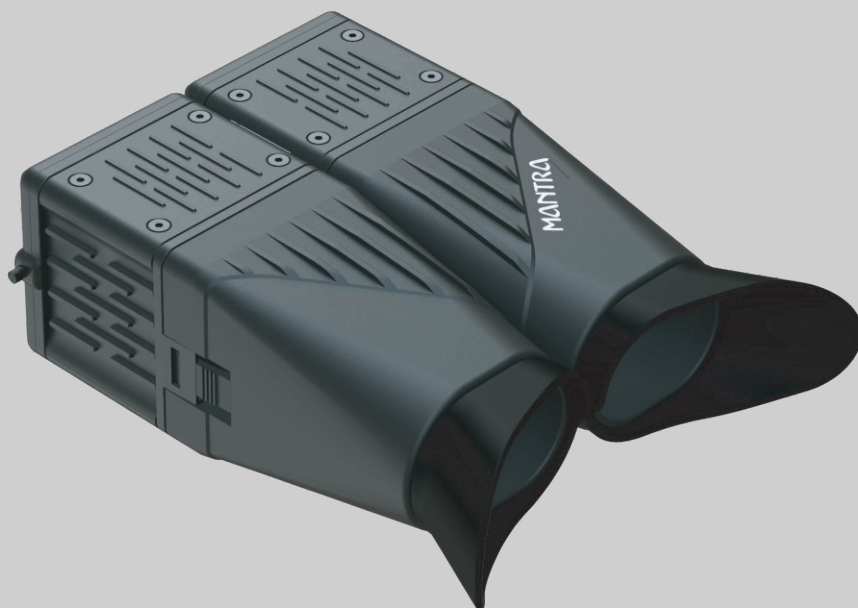


Benefits

- Portable
- Robust
- Easy-to-operate
- Durable
- Highly Reliable



Features



Adjustable Inter Pupillary Distance



Unaffected by Ambient Lighting



Dust & Water Resistant



Compliance to EYE Safety Standards



Compliant with ANSI NIST & ISO Image Interchange Format



USB Powered Device



Supports Windows Operating Systems



Supports Linux Operating Systems

Dual IRIS Scanner

MATISX™



MATISX is a rugged, portable and easy-to-use dual-iris capture device that can simultaneously capture both irises with higher accuracy and greater speed. The innovative dual iris scanner is packed with compelling features that make the device suitable for diverse biometric enrollment and identification applications.

At a Glance

IRIS Sensor

Parameters	Specification
Simultaneous Capture	: Dual IRIS Capture
IRIS Diameter	: > 210 Pixel
Spatial Resolution	: > 60 % @ 4.0 LP/mm
Pixel Resolution	: > 20 Pixel/mm
Image Margins	: Left & Right \geq 0.5x IRIS Diameter, Top & Bottom \geq 0.25x IRIS Diameter
Pixel Depth	: 8 Bits/Pixel (256 Gray Level)
Imaging Wavelength	: 700 - 900 nm
Frame Rate	: \geq 10 Frames/Sec
Scan Type	: Progressive
Sensor SNR	: > 36 dB
Capture Mode	: Auto Capture with Built-in Quality Check
Illumination	: Near Infra Red (NIR)
Capture Distance	: > 100mm from the Front of Camera mirror
Capture Volume (WxHxD)	: 30 x 22.5 x 15 mm
Exposure Time	: < 33ms

Hardware

Parameters	Specification
Interface	: USB2.0 (USB-IF Certified)*
Operating Voltage	: 5V +/- 5% (USB Powered Device)
Current Consumption	: Operating :- < 350 mA (Max) , Stand By :- < 160 mA (Max)
Operating Temperature	: 0 to 50 °C
Operating Humidity	: 10-90% RH, Non-Condensing
ESD Protection	: +/-4kV (Contact Discharge), +/-8kV (Air Discharge)
Device Dimension	: 185 x 145 x 62 mm
Device Weight	: 0.41Kg

Platform

Parameters	Specification
Operating System	: Windows x86 and x64, Linux

Certifications

Parameters	Specification
Biometric Data Interchange Format	: ISO 19794-6 for IRIS Image, ISO 29794-6 for image quality
EMI / EMC Compliance	: CE & FCC Part 15B class B*
Environmental, Health and Safety	: ROHS*
Safety	: Exempt Group per IEC 62471:2006-07, IS13252 (Part 1)*
Ingress Protection Rating	: IP65*
Device Driver	: WHQL Certified

*Certifications are Under Process